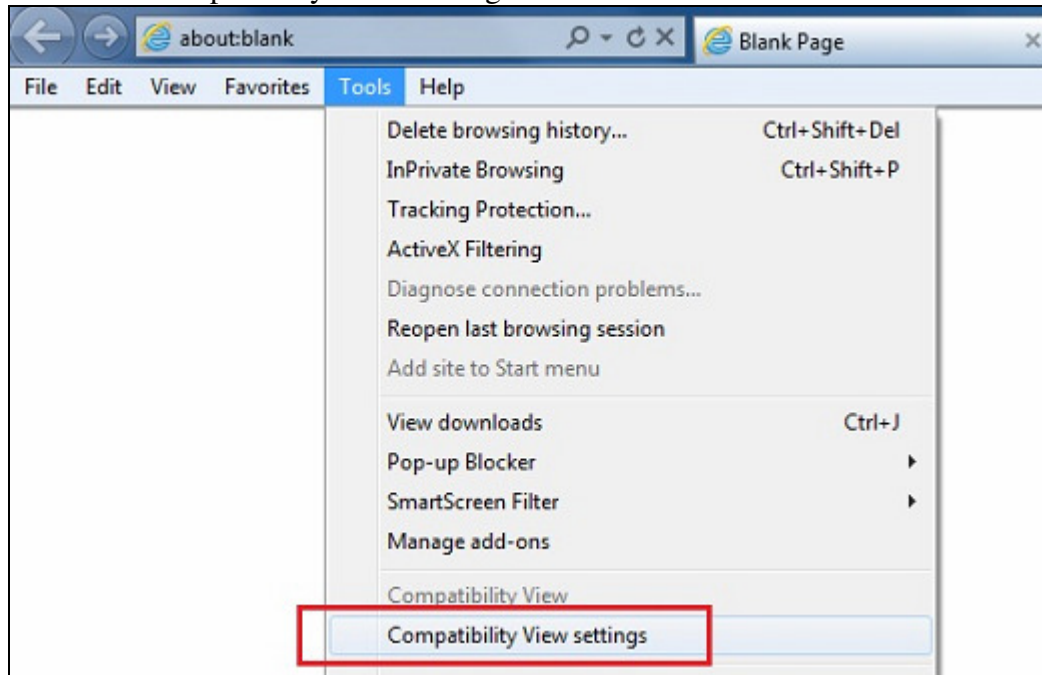


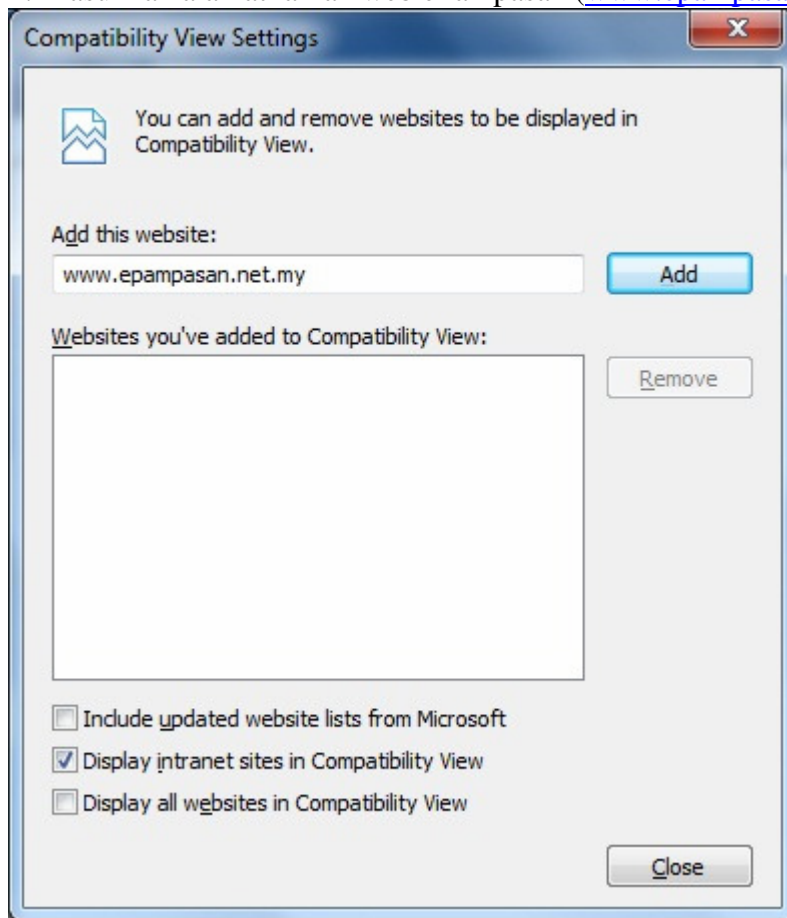
Pengguna Windows Internet Explorer (IE) 9

Sila tukar *Option* IE 9 jika anda menghadapi masalah mengguna laman ePampasan

1. Tools > Compatibility View Settings



2. Masukkan alamat laman web ePampasan (www.epampasan.net.my) dan tekan "Add" dan "Close".



3. Sila masuk semula ke laman web ePampasan